

FUTEK MODEL FFP350  
ITEM# FSH01527

# FLAT PLATE LOAD CELL

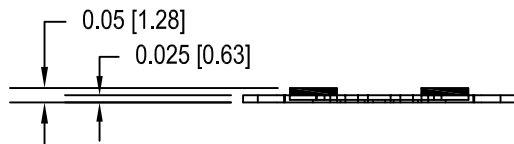
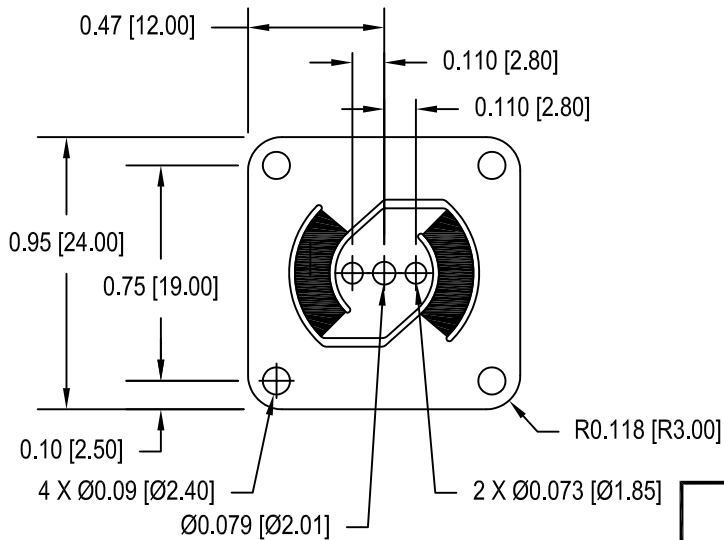
(Previously FR1075P-Q11046)

Drawing Number: FI1117-B

INCH [mm] | R.O.= Rated Output

WIRING CODE (WC1)

+Excitation	-Excitation	+Signal	-Signal
RED	BLACK	GREEN	WHITE

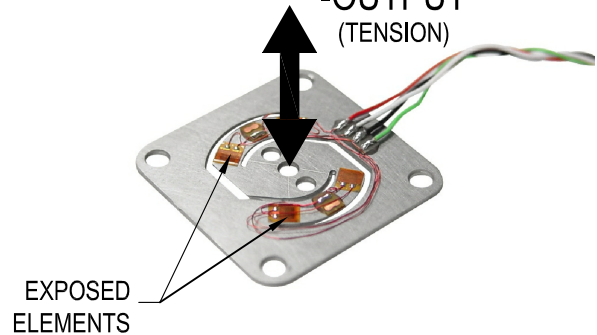


## SPECIFICATIONS:

RATED OUTPUT	1.5 mV/V nom.
CAPACITY	1 lb
SAFE OVERLOAD	150% of R.O.
ZERO BALANCE	±5% of R.O.
EXCITATION (VDC OR VAC)	10 MAX
BRIDGE RESISTANCE	350Ω nom
NONLINEARITY	±0.25% of R.O.
HYSTERESIS	±0.25% of R.O.
NONREPEATABILITY	±0.1% of R.O.
TEMP. SHIFT ZERO	±0.02% of R.O./°F (0.036% of R.O./°C)
TEMP. SHIFT SPAN	±0.02% of LOAD/°F (0.036% of LOAD/°C)
COMPENSATED TEMP.	60 to 160°F (15 to 72°C)
OPERATING TEMP.	-60 to 200°F (-51 to 93°C)
MATERIAL	300 Series S.S.
CABLE: #29 AWG, 4 Conductor, Teflon Wire, 6 in [152] Long	
ACCESSORIES AND RELATED INSTRUMENTS AVAILABLE	
CALIBRATION (AVAILABLE)	5 pt. TENSION OR COMPRESSION; 60.4KΩ SHUNT CAL VALUE.
CALIBRATION TEST EXCITATION	5 VDC

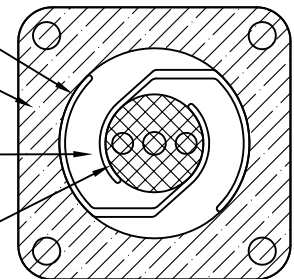
+OUTPUT  
(COMPRESSION)

-OUTPUT  
(TENSION)



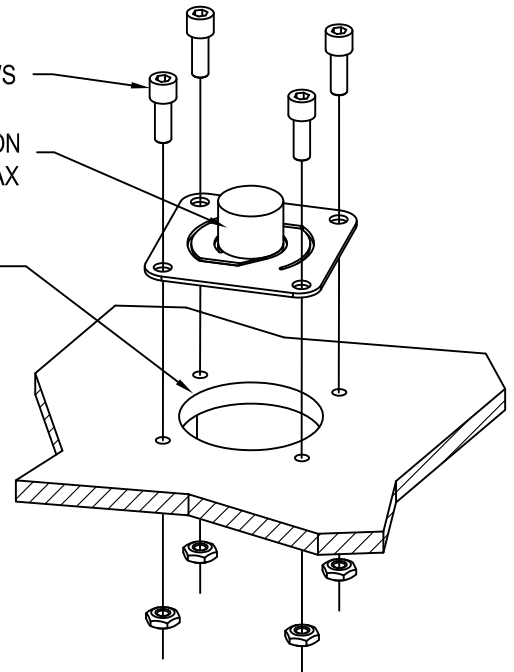
## MOUNTING GUIDE

Ø0.66 [Ø16.8] MIN  
SUPPORT/MOUNTING SURFACE  
DO NOT APPLY LOAD  
LOADING SURFACE  
Ø0.34 [Ø8.6] MAX



4 X #2 OR M2 SCREWS  
LOAD BUTTON  
Ø0.34 [Ø8.6] MAX

Ø0.66 [Ø16.8] MIN  
CLEARANCE



**FUTEK**  
ADVANCED SENSOR TECHNOLOGY, INC.

This drawing is submitted solely for the information and exclusive use of the original addressee. It is not to be divulged in whole or in part, by any firm or individual without written permission from FUTEK

**Sensocon**  
Sensorik und Messtechnik

Sensocon GmbH  
Hindenburgstr. 24  
67433 Neustadt  
Germany

Fon: +49-(0) 6321-9684013  
Fax: +49-(0) 6321-9684014  
<http://www.sensocon.de>